



THE BEEF CATTLE HERD BOOK

FOR BEST BREEDING RESULTS

FLHB
HBBV

Beef Cattle Switzerland is the service organisation for Swiss suckler cow and beef cattle breeders. The Swiss Beef Cattle Herd Book (SBCHB), which has been officially recognised by the Swiss Confederation since 1986, is an important suborganisation of Beef Cattle Switzerland.

The SBCHB provides various services for the breeds registered in the Herd Book (currently 38 breeds). The objective of the farms and the SBCHB is to use breeding records and analyses to achieve improvements in beef cattle husbandry on both the genetic and the economic levels.

This leaflet introduces the Swiss Beef Cattle Herd Book, its activities and services, and the breeds represented in the SBCHB.

Lupfig, January 2024, Beef Cattle Switzerland



TASKS AND SERVICES

BRAND MANAGEMENT

- Developing marketing strategies
- Supporting product marketing
- Brand promotion



Natura-Veal



Natura-Beef

COMMUNICATION

- Representation at exhibitions and trade fairs
- Organisation of events – beef.ch
- Lobbying to the Swiss Confederation & cantons
- Organisation of seminars and courses
- Publication of documents and the quarterly magazine
- Online database BeefNet
- SmartCow app



MUTTERKUH SCHWEIZ
VACHE MÈRE SUISSE
VACA MADRE SUIZA
SWISS BEEF CATTLE

HERD BOOK



Herd book management and beef productivity monitoring for the breeds Angus, Aubrac, Bazadaise, Blonde d'Aquitaine, Brown Swiss, Charolaise, Chianina, Dahomey, Dexter, Evolène, Galloway, Gascon, Gelbvieh, Hereford, Hérens, Highland Cattle, Hinterwälder, Limousin, Loline Cattle, Luig, Maine Anjou, Murnau Werdenfelser, Parthenaise, Piemontese, Pinzgauer, Pustertaler Sprinzen, Salers, Shorthorn, Simmental, Speckle Park, Texas Longhorn, Tux Zillertaler, Tyrol Grey, Vorderwälder, Vosgienne, Wagyu, Welsh Black and Zebu (Bos indicus).



Inspection of production requirements

OBJECTIVES OF THE SBCHB

- To select the best cows and bulls and determine the most promising mating pairs
- To provide information about the productivity of the breeding cattle, their parentage and progeny to breeders, breeding associations and artificial insemination organisations
- To provide a basis for comparing farms
- To improve individual traits and thus overall economic viability of beef cattle for breeding and finishing farms

The overall breeding objective is to raise economically viable beef cattle on a diet of roughage. The breed-specific objectives are laid down by the breeding associations.

Strengths of beef cattle breeds:

- Highly suited to suckler cow husbandry
- Good fertility and easy calving
- Ideal build and strong limbs
- Robust and resistant
- Good juvenile development, longevity
- Excellent grazers with good roughage feed conversion
- Very good meat:bone ratio
- Superb meat quality
- Ideal for crossbreeding with production cattle

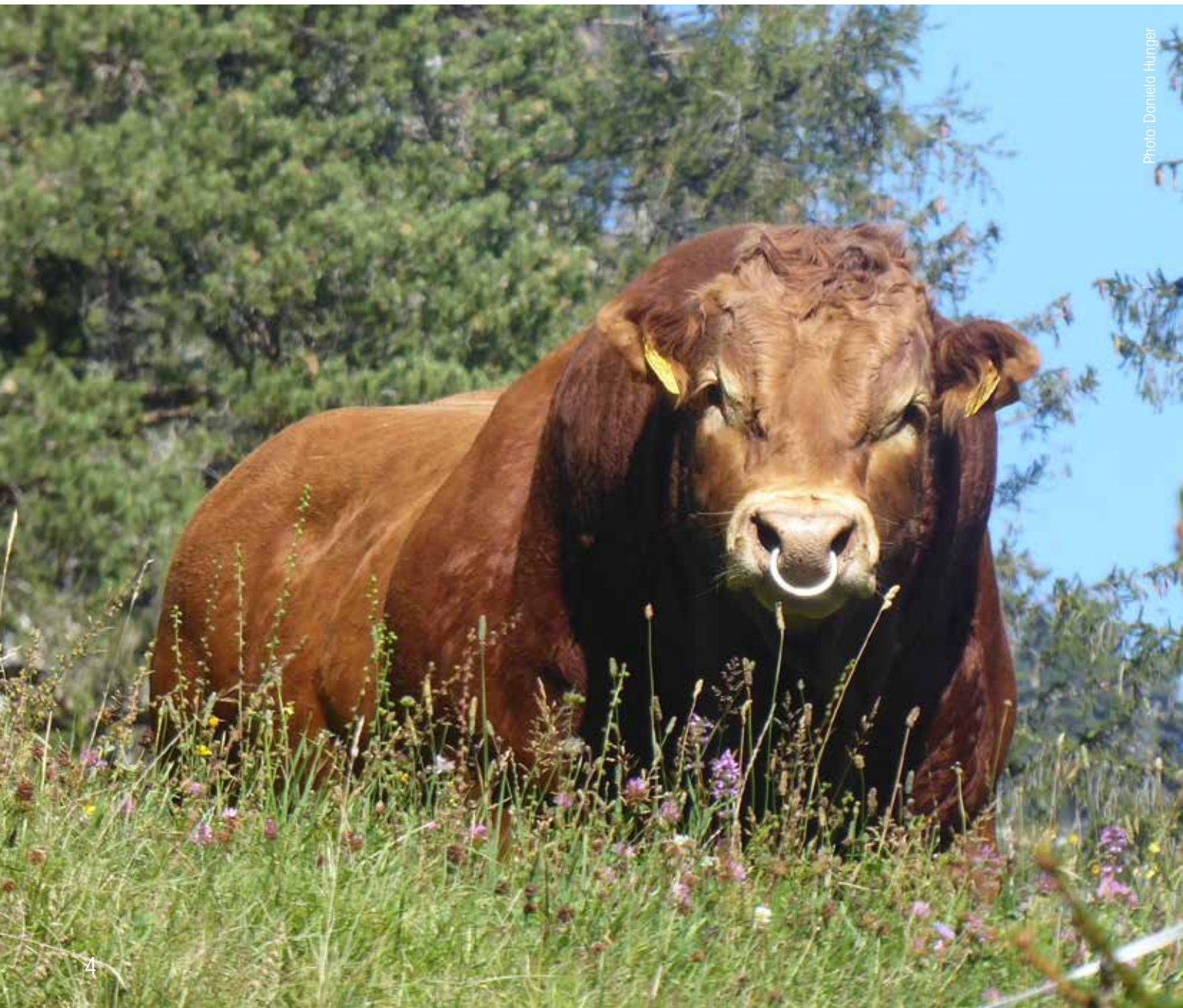


Photo: Daniela Hunger

SERVICES PROVIDED BY THE SBCHB

The Swiss Beef Cattle Herd Book is responsible for recording and evaluating productivity and conformation traits, and managing the requirements for inclusion in the Herd Book. Depending on the service module for the breed, various records are maintained regarding the parentage, productivity and conformation traits of the animals. Certain breeds (e.g. Lowline Cattle, Welsh Black) have not yet been allocated to a Herd Book module.

Modules	Estimated breeding value	Growth breeds	Conformation breeds	Basic breeds
Breed	AN, AU, BV, CH, LM, SM	AL, HH, LG, PI, SH, SL	BD, DR, GA, HI, TX	DA, EV, GC, GV, HR, HW, MA, PS, PZ, TL, VS, WA, ZE
Pedigree and records				
Pedigree registration	✓	✓	✓	✓
Registration of animals in the Herd Book	✓	✓	✓	✓
LA/Classification of bulls	✓	✓	✓	✗
LA/Classification of cows	✓	✓	✓	✗
Weighing of calves	✓	✓	✗	✗
Entry of slaughter data	✓	✓	✓	✓
Evaluation				
Reproduction evaluation (FLEK)	✓	✓	✓	✓
Productivity evaluation (FLEK)	✓	✓	✗	✗
Beef production evaluation	✓	✓	✓	✓
EBV reproduction	✓	✗	✗	✗
EBV weaning	✓	✗	✗	✗
EBV beef production	✓	✗	✗	✗



SERVICES PROVIDED BY THE SBCHB

The **Productivity monitoring data** (Fleischrinderleistungskontrolle, FLEK), **linear assessment** (LA) and **estimated breeding values** (EBVs) are defined based on the typical requirements relevant to suckler cow and beef cattle husbandry in Switzerland.



Photo: Beef Cattle Switzerland

BEEF CATTLE PRODUCTIVITY MONITORING

The following data is recorded during beef cattle productivity monitoring (FLEK):

- Calf weight gain (birth weight, daily gain, weaning weight)
- Cow reproductivity (age at first calving, calving interval, ease of calving, productivity rating)



Photo: Beef Cattle Switzerland

LINEAR ASSESSMENT / CLASSIFICATION

- Linear assessments of bulls and cows can be used to select the best breeding animals, based on over twenty traits.
- It provides information about conformation traits (breed characteristics, frame, muscularity, limbs). These have a direct influence on productivity, longevity and animal welfare.

ESTIMATED BREEDING VALUES

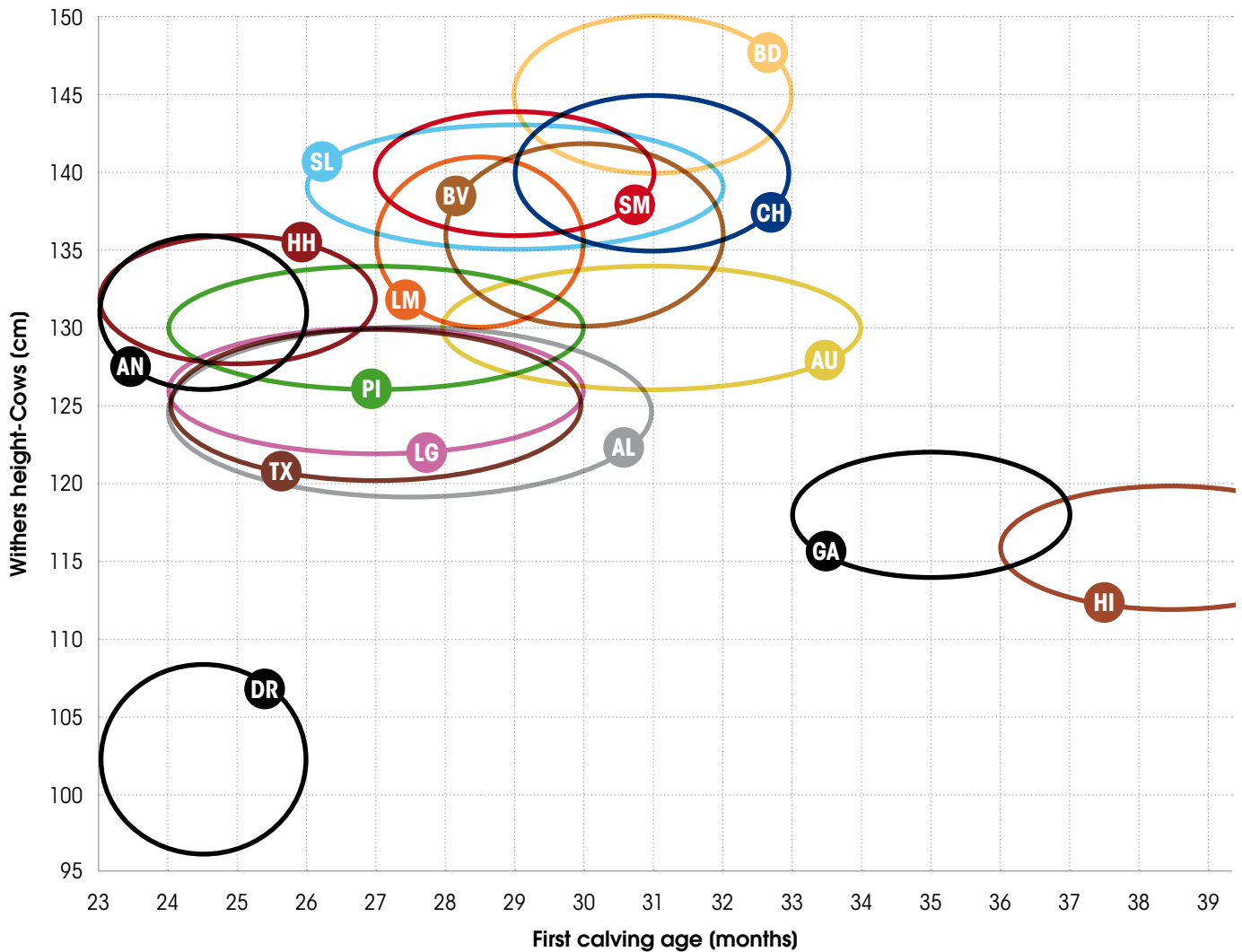
The following estimated breeding values are used to assess the genetic potential of an animal (the abbreviations noted below are those used on Swiss pedigree certificates):

- Birth characteristics / beef and dairy
 - Direct & maternal calving ease (GA, maternal for beef only)
 - Direct & maternal birth weight (GG, maternal for beef only)
 - Gestation period (TD, dairy only)
- Direct & maternal weaning weight (AG)
- Slaughter characteristics for veal calves, Natura-Beef and beef cattle
 - Slaughter weight (SG)
 - Meat mass (F)
 - Fat (FET)



COMPARISON OF BREED TRAITS

Comparison of the breed traits **cow withers height** and **age at first calving** for Switzerland's sixteen most popular beef cattle breeds. All these – and 22 other breeds – are represented in the SBCHB.



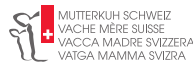
BREED ABBREVIATIONS

AL	TGR*	Tyrol Grey	GV	GVH*	Gelbvieh	PZ	PIN*	Pinzgauer
AN	AAN*	Angus	HH	HER*	Hereford	SH	BSH*	Shorthorn
AU	AUB*	Aubrac	HI	HLA*	Highland Cattle	SK		Speckle Park
BD	BAQ*	Blonde d'Aquitaine	HR	ERI*	Hérens	SL	SAL*	Salers
BV	BSW*	Brown Swiss	HW	HWD*	Hinterwälder	SM	SIM*	Simmental
BZ	BZD*	Bazadaise	LC		Lowline Cattle	TL		Texas Longhorn
CA	CIA*	Chianina	LG	LUI*	Luining	TX	TUX*	Tux-Zillertal
CH	CHA*	Charolais	LM	LIM*	Limousin	VS		Vosgienne
DA		Dahomey	MA		Maine Anjou	VW		Vorderwälder
DR	DXT*	Dexter	MW		Murnau Werdenfelser	WA	WAG*	Wagyu
EV		Evolène	PA	PAR*	Parthenaise	WB	WBL*	Welsh Black
GA	GLW*	Galloway	PI	PIE*	Piemonteser	ZE		Zebu (Bos Indicus)
GC	GAS*	Gascon	PS		Pustertaler Sprinzen			

* Interbeef abbreviation

UNDERSTANDING THE BREEDING CERTIFICATE

FLHB FLEISCHRINDERHERDEBUCH
HBBV ZUCHTAUSWEIS



HERD BOOK DES BOVINS A VIANDE **FLHB**
CERTIFICAT D'ELEVAGE **HBBV**

Name Nom	Berger's LARISSA-P TPF* 6 5 Pp* PS	Ohrranke Marque d'oreille	CH 120.1147.7522.8	Geschlecht Sexe	W / F	geb. née	01.08.2016 2
Rasse Race	Simmental / SM70	Farbschlag Couleur	rot/rouge 1	FLHB-Status Statut HBBV	aufg. / admis(e)	Dauerleistung Pert. durable	3
Züchter Éleveur	Werner Berger, Mittelgäustr.1, 4617 Gunzgen	Inzuchtgrad Degré de consanguinité	7	0.2 %		DNA ADN	4
Besitzer Propriétaire	Ueli Rindlisbacher, Kirchbözberg 3, 5225 Bözberg					SNP SNP	Vater/père ok

V/P	HALLAS vom Hanselhof TPF*	PP	DE 012.6685.3425.5	941875520	VV/PP	HERALDIK vom Hanselhof TPF*	PP	VVV/PPP	HEINER MB Simmental	Pp
	29.10.2011		rot/rouge			DE 012.6708.4689.6			DE 015.0261.5047.0	
	Simmental / SM70		anerk./reconnu(e)			26.10.2000	rot/rouge		Simmental / SM70	rot/rouge
						Simmental / SM70	aufg. / admis(e)		anerk./reconnu(e)	
10	EIGENLEISTUNG PERFORMANCE PROPRE	GG KN AG205 TZ205 PN DV PS205 GJ205				38		VVM/MPP	RONDA vom Hanselhof	P
						09.08.22 105 ⁽⁹⁶⁾ 104 ⁽⁹⁷⁾ 109 ⁽⁹⁹⁾ 102 ⁽⁹⁹⁾ 119 ⁽⁹¹⁾ 84 ⁽⁹⁹⁾			DE 012.6703.4971.7	
	KÄLBER VEAUX	Anz. Nbre 8 GG KN/DV 1+2 (%) 10 219 41 97.2	AG205 TZ205 PS205 GJ205			17.04.2004 - - - / - / - / -			Simmental / SM70	rot/rouge
			340 1461						anerk./reconnu(e)	
11	ZUCHTWERTE VALEURS D'ELEVAGE	GAd _b AGD DNd _b PSD	AGM PSM	SCurr _{ur} PMurr _{ur}	Furr _{ur} Cur _{ur}	FETurr _{ur} GRAurr _{ur}		VM/MPP	VINGEGARD ROCKY-ET	PP
	09.08.22	111 ⁽⁹⁰⁾ 101 ⁽⁹⁰⁾	107 ⁽⁶¹⁾ 117 ⁽⁷⁶⁾	124 ⁽⁸⁰⁾	96 ⁽⁷⁵⁾				DK 041.5240.0877.6	falb
									Simmental / SM70	
									anerk./reconnu(e)	
9	EXTERIEUR EXTERIEUR	WH LG Ra Fo Be Fu Sy HG PV QR Fo Mu Me Sy						94	DE 016.0110.4158.2	
									Simmental / SM70	rot/rouge
									anerk./reconnu(e)	
M/M	Berger's LIANA-P	P	CH 120.0914.7706.1	941881857	MV/PM	HOENESS	PP*	MVV/PPM	Hedetoft UNITED	P
	02.09.2011		falb			DE 012.6010.5246.4			DK 080.1850.0096.5	
	Simmental / SM70		aufg. / admis(e)			03.10.2006	rot/rouge		Simmental / SM70	rot/rouge
						Simmental / SM70	aufg. / admis(e)		aufg. / admis(e)	
10	EIGENLEISTUNG PERFORMANCE PROPRE	GG KN AG205 TZ205 EKA ZKZ PN DV PS205 GJ205 APV IV						MVM/MPM	ALMA	P
		43 1 366 1575 24 362							DE 012.6006.5958.9	
	KÄLBER VEAUX	Anz. Nbre 8 GG KN/DV 1+2 (%) 11 10 42 100.0	AG205 TZ205 KZP PS205 GJ205 CP						Simmental / SM	rot/rouge
			401 1748						anerk./reconnu(e)	
11	ZUCHTWERTE VALEURS D'ELEVAGE	GAd _b AGD DNd _b PSD	AGM PSM	SCurr _{ur} PMurr _{ur}	Furr _{ur} Cur _{ur}	FETurr _{ur} GRAurr _{ur}		MM/M	LILLI	L
	09.08.22	88 ⁽⁶³⁾ 112 ⁽⁶⁸⁾							CH 120.0095.0047.8	
									Simmental / SM60	rot/rouge
									anerk./reconnu(e)	
9	EXTERIEUR EXTERIEUR	WH LG Ra Fo Be Fu Sy HG PV QR Fo Mu Me Sy							CH 712.5020.7431.2	
	02.05.2019	140 980 - 98 97 97 97							Simmental / SM60	rot/rouge
									anerk./reconnu(e)	
									Simmental / SM60	rot/rouge

16.11.2022, Seite 1 / 2

- | | | | |
|--------------------------------|--|-----------------------------------|---|
| Front | <ul style="list-style-type: none"> Identity of the animal Breeder and owner Pedigree to third generation | 6 Genetic defects | Listing of the main genetic defects per breed. More information about the various genetic defects can be found on our website |
| Back | <ul style="list-style-type: none"> Individual productivity Breeding values Conformation / linear assessment Current insemination (cows and bulls) Productivity of progeny | 7 degree of inbreeding | More information about inbreeding on the leaflet about inbreeding on our website. |
| 1 SBCHB status | Relevant when purchasing bulls | 8 Anz. | Number of progeny |
| 2 geb. | Date of birth | 9 Conformation | |
| 3 Longterm productivity | L between 8 and 11 weaned calves
LL 12 or more weaned calves | WH cm | Withers height |
| 4 DNA | Pedigree checks: Genetic typing available if a number has been entered | LG kg | Liveweight |
| SNP | Checks of pedigree, horn status and genetic defects | Ra score | Breed characteristics |
| 5 Horn status | PP Homozygous polled
Pp Heterozygous polled
P Heterozygous or homozygous polled
PS Scurs phenotypically recorded
PP* DNA tested, homozygous polled
Pp* DNA tested, heterozygous polled
pp* DNA tested, homozygous horned | Fo score | Frame |
| | | Be score | Muscularity |
| | | Fu score | Limbs |
| | | Sy score | Overall |
| | | 10 Individual productivity | |
| | | GG kg | Birth weight |
| | | KN rating | Calving score = calving ease rate |
| | | | 1 = no assistance 2 = with some assistance |
| | | | 3 = difficult calving 4 = Caesarian section |
| | | AG205 kg | Adjusted ¹ weaning weight after 205 days |
| | | TZ205 g | Adjusted ¹ daily gain after 205 days |
| | | EKA months | Age at first calving |
| | | ZKZ days | Calving interval |

¹Adjusted for sex, birth month, age of cow and husbandry system.

Berger's LARISSA-P TPF* CH 120.1147.7522.8

ZUCHTWERTE / VALEURS D'ÉLEVAGE Datum 09.08.2022			
	Label	Zuchtwert	
11	GAd/FNd ^{beef}	A 102(46)	schwer/difficile leicht/facile
	GGd/PNd ^{beef}	A 93(58)	schwer/lourd leicht/léger
	GAm/FNm ^{beef}	A 95(39)	schwer/difficile leicht/facile
	GGm/PNm ^{beef}	A 103(55)	schwer/lourd leicht/léger
	GAd/FNd ^{dairy}	A 103(32)	schwer/difficile leicht/facile
	GGd/PNd ^{dairy}	A 101(35)	schwer/lourd leichter/léger
	TDD/DGd ^{dairy}	A 87(37)	lang/lang kurz/court
	AGD/PSD	CH 100(39)	leicht/léger schwer/lourd
	AGM/PSM	A 111(42)	leicht/léger schwer/lourd
	SG/PM ^{Kv}	A 112(13)	leicht/léger schwer/lourd
	F/CKv	A 122(15)	leer/fleischig/décharné reich/charnu
	FET/GR ^{Kv}	A 98(14)	ungedeckt/maigre überfett/gras
	SG/PM ^{NB}	A 109(34)	leicht/léger schwer/lourd
	F/CK ^{NB}	A 115(32)	leer/fleischig/décharné vollfleischig/charnu
	FET/GR ^{NB}	A 107(32)	ungedeckt/maigre überfett/gras
	SG/PM ^{MT}	A 112(27)	leicht/léger schwer/lourd
	F/CK ^{MT}	A 122(26)	leer/fleischig/décharné reich/charnu
	FET/GR ^{MT}	A 100(26)	ungedeckt/maigre überfett/gras

EIGENLEISTUNG / PERFORMANCE PROPRE							
GG PN	33	KN DV	1	AG205 PS205	363	TZ205 GJ205	1610

10

LINEARE BESCHREIBUNG / DESCRIPTION LINEAIRE		Datum / Date	27.02.2020	WH HG	135 cm	LG PV	722 kg
Rassenmerkmale / Qualité Race	-	BEMUSKELUNG / MUSCULATURE 91					
FORMAT / FORMAT	93	Kondition / Couverture 5					
Wideristhöhe / Hauteur au garrot	3	Schulter / Epaulés 7					
obere Linie / Ligne de dessus	5	Lenden / Reins 7					
Länge / Longueur	4	Stotzen Rundung / Arrondissement de la culot 7					
Becken Länge / Longueur du bassin	6	Stotzen Länge / Longueur de la culotte 7					
Becken Neigung / Inclinaison du bassin	5	FUNDAMENT / MEMBRES 93					
Tiefe Brust / Profondeur de la poitrine	6	Gliederstärke / Ossature 4					
Weite Hüftbein / Largeur des hanches	5	Stellung vorne / Aplombs antérieurs 5					
Euter Länge / Longueur de la mamelle	6	Sprunggelenkwinkelung / Profil du jarret 5					
Euter Tiefe / Profondeur de la mamelle	6	Fesseln / Paturons 5					
Zitzen Länge / Longueur des trayons	5	Klauen / Onglons 5					
Zitzen Dicke / Epaisseur des trayons	4	Synthese / Synthèse 92					

12

13 Besamung, Belegung / Insémination, Saillie

SAPHIR	DE 009.4909.1543.7	24.06.2022
--------	--------------------	------------

Kälber / Veaux		*Adoptivkalb / veau adoptif				** von Adoptivmutter aufgezogen / élevé par mère adoptive				Rassenmerkmale / Qualité race			Schlachtkörper Carcasse	
Lakt / Lact	Geb. dat. / Date naiss.	Vater / Père		Kalb / Veau		Zuwachs / Accroissement		Rassenmerkmale / Qualité race			Schlachtkörper Carcasse			
		Name / Nom	Ohrrmarke / Marque d'oreille	Name / Nom	Ohrrmarke / Marque d'oreille	Geschl. / Sexe	KN DV	GG PN kg	AG205 PS205 kg	TZ205 GJ205 g	KZP CP	Farbschlag / Couleur	Hörner / Cornes	Schlachtkörper Carcasse
1	23.07.18	GIGANT	DE 014.0120.9670.9	LARS-P	CH 120.1307.0188.1	M/M	1 37	401	1776			rot/rouge	Hornl./s.cornes	-
2	05.07.19	STEINADLER	DE 009.3763.1910.6	LEGACY	CH 120.1307.0202.4	M/M	1 39	427	1893	59		rot/rouge	Hornl./s.cornes	-
3	29.07.20	WORLDWIDE	CA 000.0071.7966.1	LINDA-P	CH 120.1508.1118.8	W/F	1 44	436	1912			rot/rouge	Hornl./s.cornes	-
4	08.05.22	AMBER	CH 120.1307.0201.7	LAVINIA-P	CH 120.1508.1143.0	W/F	1 39	335	1444			rot/rouge	Hornl./s.cornes	-
EKA Mt. / APV mois : 24		ZKZ Tage / IV jours : 462		KF / FV : 1.77				40	400	1756	59.0			

FLHB-Mutterkuh Schweiz, Brugg
HBBV-Vache mère Suisse, Brugg
www.mutterkuh.ch

16.11.2022, Seite 2 / 2

15



11 Breeding values

BLUP / Model animal; for each trait, the average breeding value for the cattle breed is set to 100.0

GAd ^{beef/dairy}	BV	Direct calving ease	Genetic potential for easy calving
GGd ^{beef/dairy}	BV	Direct birth weight	Genetic potential for birth weights
GAm ^{beef}	BV	Maternal calving ease	Genetic potential for easy calving in female progeny
GGm ^{beef}	BV	Maternal birth weight	Genetic potential for birth weights in female progeny
TDD ^{dairy}	BV	Direct gestation period	Gestation period for a dairy cow inseminated by a beef bull
AGD	BV	Direct weaning weight	Genetic weight gain potential up to weaning (liveweight)
AGM	BV	Maternal weaning weight	Genetic potential for milk yield and calf-bearing traits
SG	BV	Slaughter weight	Genetic potential for the slaughter weight for VC, NB and BC
F	BV	Meat mass	Genetic potential for meat mass (CH-TAX classification) for VC, NB and BC
FET	BV	Fat coverage	Genetic potential for fat coverage for VC, NB and BC
B%	%	Coefficient of determination	Variability of this EBV (included in brackets after the breeding value)

Label Origin BV A = Pedigree BV CH = traditional BV I = Interbeef BV
G = Genomic breeding value GA = Genomic breeding value + Pedigree breeding value combined

Abbreviations: BV = breeding value / VC = veal calves / NB = Natura-Beef / BC = beef cattle

12 Linear assessment

The classification assesses the animal on the basis of conformation characteristics and breeding objectives. The assessment yields a score in the range 60–99.

60–64: poor	80–84: good+
65–64: sufficient	85–89: very good
75–79: good	90–99: excellent

The scores for each category of traits (breed characteristics, frame, muscularity, limbs) are weighted and combined into the overall score. Breed characteristics are only included in the classification for Galloway and Highland Cattle.

For the linear assessment, each individual trait is assigned a rating from 1 to 9. The linear assessment therefore provides information about how the traits are presented. 1 and 9 are the biological extremes and 5 is the average value. Depending on the breeding objective, a score of 9, 5 or e.g. 7 may be desirable.

13 Insemination

performed with this bull

14 Calves

KZP %	Productivity rating (weaning weight in relation to the cow's weight at weaning, adjusted to 205 days)
EKA months	Age at first calving
ZKZ days	Calving interval
KF index	Reproduction index combining EKA and ZKZ

15 Certification

The SBCHB is recognised by the Swiss Confederation and certified by ICAR (International Committee for Animal Recording)

PRODUCTION GOALS AND BREED SELECTION

Breeds are selected based on the farm's natural environment and the production objectives.



- ÖLN* & organic farming
- Location / Topography
- Climate
- Land use
- Feed basis
- Individual preference
- Available time
- Buildings and facilities
- Marketing possibilities
- Summer pastures (alpine grazing)



- Breeding animals
- Weanlings for slaughter
- Feeder calves
- Beef cattle (fattened on the farm)



- Muscularity
- Daily gain
- Milk yield
- Early maturity
- Size
- Feed conversion / Feed requirements
- Limbs
- Calving characteristics / ease
- Meat quality

* ÖLN = Environmental performance record

Key traits used in beef breeding genetics

Various productivity traits may be relevant, depending on whether beef breeding genetics are being applied to beef or dairy cattle (crossbreeding). Since the sale of young animals is the primary income source in suckler cow husbandry, cow reproductive performance is just as important as calf weight gain.



Photo: R. Hangartner

HERD BOOK EVENTS

SWISSOPEN – ELITE SHOW FOR BEEF CATTLE

The elite show for beef cattle is held every two years. Any SBCHB-accredited breeder may enter with their certified animals. The cattle are assessed in a number of categories, with prizes for the best animals.



Photo: Beef Cattle Switzerland

BULL MARKET

The bull market is held three times a year. Visitors to the market can compare the bulls and bid on bulls suitable for their own farm. The auction is held online as well as at the market. All breeds listed in the Herd Book may be presented at the bull market.



Photo: Beef Cattle Switzerland

BEEF CATTLE BREEDS

ANGUS AN/AAN

Origin: Northeast Scotland (Aberdeen)



Withers height, cows	126 – 136 cm
Weight, cows	550 – 750 kg
Withers height, bulls	136 – 146 cm
Weight, bulls	850 – 1200 kg
Birth weight	34 – 39 kg
Daily gain	1100 – 1450 g
Age at first calving	23 – 26 months
Calving interval	360 – 368 days
Easy calving rate	98,1 %
SBCHB herds	172 (2021)
SBCHB cows	4232 (2021)

- Naturally polled; colour: solid black or red
- Early maturity
- Medium build
- Good calf-bearing traits (easy calving, good milk yield)
- High meat yield, good carcass quality
- Grassland-based diet

AUBRAC AU/AUB

Origin: France (Massif Central)



Withers height, cows	126 – 134 cm
Weight, cows	550 – 700 kg
Withers height, bulls	136 – 144 cm
Weight, bulls	800 – 1100 kg
Birth weight	38 – 43 kg
Daily gain	1100 – 1400 g
Age at first calving	28 – 34 months
Calving interval	363 – 371 days
Easy calving rate	98,9 %
SBCHB herds	37 (2021)
SBCHB cows	622 (2021)

- Light brown with pale patches, dark pigmentation
- Average to late maturity
- Medium build
- Good calf-bearing traits (easy calving, good milk yield)
- Low-maintenance
- Good roughage feed conversion

BLONDE D'AQUITAINE BD/BAQ

Origin: Southwest France



Withers height, cows	140 – 150 cm
Weight, cows	750 – 950 kg
Withers height, bulls	148 – 156 cm
Weight, bulls	1000 – 1400 kg
Birth weight	40 – 48 kg
Daily gain	1050 – 1450 g
Age at first calving	29 – 33 months
Calving interval	372 – 380 days
Easy calving rate	97,7 %
SBCHB herds	8 (2021)
SBCHB cows	156 (2021)

- Light-blond to wheat-coloured
- Average to late maturity
- Large build
- Fine bone structure
- Good calving characteristics
- High meat yield

BROWN SWISS BV/BSW

Origin: Central Switzerland



Withers height, cows	130 – 142 cm
Weight, cows	600 – 750 kg
Withers height, bulls	140 – 152 cm
Weight, bulls	800 – 1000 kg
Birth weight	38 – 43 kg
Daily gain	1150 – 1500 g
Age at first calving	28 – 32 months
Calving interval	383 – 391 days
Easy calving rate	95,6 %
SBCHB herds	18 (2021)
SBCHB cows	476 (2021)

- Brown with light patches
- Early to average maturity
- Large build
- Good calf-bearing traits (milk yield, fertility)
- Good calving characteristics
- Dual-purpose breed

CHAROLAISE CH/CHA

Origin: Eastern France



Withers height, cows	135 – 145 cm
Weight, cows	700 – 900 kg
Withers height, bulls	145 – 155 cm
Weight, bulls	1000 – 1300 kg
Birth weight	42 – 48 kg
Daily gain	1150 – 1600 g
Age at first calving	29 – 33 months
Calving interval	369 – 377 days
Easy calving rate	97,1 %
SBCHB herds	24 (2021)
SBCHB cows	643 (2021)

- White to cream
- Average to late maturity
- Large build
- Good feed conversion
- Strong musculature
- Good carcass yield

DEXTER DR/DXT

Origin: Ireland



Withers height, cows	96 – 108 cm
Weight, cows	300 – 400 kg
Withers height, bulls	106 – 118 cm
Weight, bulls	400 – 600 kg
Birth weight	19 – 24 kg
Daily gain	450 – 600 g
Age at first calving	23 – 26 months
Calving interval	378 – 386 days
Easy calving rate	99,3 %
SBCHB herds	119 (2021)
SBCHB cows	727 (2021)

- Solid black, red or dun
- Early maturity
- Small build
- Good calving characteristics
- Robust
- Good milk yield

BEEF CATTLE BREEDS

EVOLÈNE EV

Origin: Switzerland (Valais)



Withers height, cows	115 – 125 cm
Weight, cows	400 – 600 kg
Withers height, bulls	120 – 130 cm
Weight, bulls	500 – 700 kg
Birth weight	27 kg
Daily gain	
Age at first calving	26 – 32 months
Calving interval	365 days
Easy calving rate	100 %
SBCHB herds	6 (2021)
SBCHB cows	28 (2021)

- Red; occasionally black with white patches
- Early maturity
- Small to medium build
- Suited to mountain pasture; temperamental
- Good milk yield, good carcass yield

GALLOWAY GA/GLW

Origin: Southwest Scotland



Withers height, cows	114 – 122 cm
Weight, cows	450 – 600 kg
Withers height, bulls	124 – 132 cm
Weight, bulls	600 – 800 kg
Birth weight	25 – 30 kg
Daily gain	500 – 750 g
Age at first calving	33 – 37 months
Calving interval	380 – 388 days
Easy calving rate	99,3 %
SBCHB herds	132 (2021)
SBCHB cows	709 (2021)

- Naturally polled, various colourings (black, dun, belted, white, rigget and red)
- Average to late maturity
- Small to medium build
- Robust
- Low-maintenance
- Good calf-bearing traits

TYROL GREY AL/TGR

Origin: Switzerland; North and South Tyrol



Withers height, cows	119 – 130 cm
Weight, cows	450 – 650 kg
Withers height, bulls	130 – 141 cm
Weight, bulls	600 – 1000 kg
Birth weight	35 – 40 kg
Daily gain	1100 – 1400 g
Age at first calving	24 – 31 months
Calving interval	342 – 380 days
Easy calving rate	96,7 %
SBCHB herds	29 (2021)
SBCHB cows	418 (2021)

- Various shades of grey (silver to iron grey)
- Early to average maturity
- Small to medium build
- Good calf-bearing traits (easy calving, good milk yield)
- Footsure in mountainous regions
- Alpine dual-purpose breed

HEREFORD HH/HER

Origin: Western England



Withers height, cows	128 – 136 cm
Weight, cows	600 – 800 kg
Withers height, bulls	138 – 146 cm
Weight, bulls	900 – 1200 kg
Birth weight	35 – 40 kg
Daily gain	1000 – 1400 g
Age at first calving	23 – 27 months
Calving interval	356 – 364 days
Easy calving rate	97,8 %
SBCHB herds	21 (2021)
SBCHB cows	346 (2021)

- Red with white throat, neck, legs, switch and neck
- Early maturity
- Medium build
- Good roughage feed conversion
- Docile
- Adaptable

HIGHLAND CATTLE HI/HLA

Origin: Northern Scotland



Withers height, cows	112 – 120 cm
Weight, cows	400 – 550 kg
Withers height, bulls	124 – 132 cm
Weight, bulls	500 – 900 kg
Birth weight	22 – 27 kg
Daily gain	450 – 600 g
Age at first calving	36 – 41 months
Calving interval	406 – 414 days
Easy calving rate	99,3 %
SBCHB herds	153 (2021)
SBCHB cows	848 (2021)

- Various colourings (red, yellow, black, dun, white and brindle)
- Late maturity
- Small build
- Good calving characteristics
- Good calf-bearing traits
- Robust and low-maintenance

LIMOUSIN LM/LIM

Origin: Southwest France



Withers height, cows	130 – 141 cm
Weight, cows	600 – 800 kg
Withers height, bulls	140 – 155 cm
Weight, bulls	900 – 1200 kg
Birth weight	38 – 43 kg
Daily gain	1100 – 1400 g
Age at first calving	27 – 30 months
Calving interval	369 – 377 days
Easy calving rate	97,7 %
SBCHB herds	145 (2021)
SBCHB cows	3102 (2021)

- Solid red to mahogany with lighter patches
- Average to early maturity
- Medium build
- Fine bone structure
- Good calf-bearing traits (good calving characteristics)
- Good meat yield

BEEF CATTLE BREEDS

LUING LG/LUI

Origin: West coast of Scotland (Isle of Luing)



Withers height, cows	122 – 130 cm
Weight, cows	500 – 650 kg
Withers height, bulls	135 – 143 cm
Weight, bulls	900 – 1200 kg
Birth weight	33 – 36 kg
Daily gain	1050 – 1350 g
Age at first calving	24 – 30 months
Calving interval	359 - 367 days
Easy calving rate	98,3 %
SBCHB herds	11 (2021)
SBCHB cows	165 (2021)

- Solid red to mahogany; usually polled
- Early to average maturity
- Small to medium build
- Undemanding and robust
- Good calving characteristics
- Good calf-bearing traits

PIEMONTESE PI/PIE

Origin: Northern Italy (Piemont)



Withers height, cows	126 – 134 cm
Weight, cows	700 – 850 kg
Withers height, bulls	140 – 150 cm
Weight, bulls	900 – 1200 kg
Birth weight	38 – 42 kg
Daily gain	1000 – 1350 g
Age at first calving	24 – 30 months
Calving interval	380 – 388 days
Easy calving rate	93,8 %
SBCHB herds	5 (2021)
SBCHB cows	227 (2021)

- White to pale grey with dark head and hind limbs
- Early to average maturity
- Medium build
- Fine bone structure
- Strong musculature
- High meat yield

SALERS SL/SAL

Origin: France (Massif Central)



Withers height, cows	135 – 143 cm
Weight, cows	600 – 800 kg
Withers height, bulls	145 – 153 cm
Weight, bulls	900 – 1100 kg
Birth weight	36 – 39 kg
Daily gain	1050 – 1400 g
Age at first calving	26 – 32 months
Calving interval	366 – 374 days
Easy calving rate	99,6 %
SBCHB herds	19 (2021)
SBCHB cows	419 (2021)

- light to dark mahogany; occasionally with black
- Average to late maturity
- Large build
- Good calving characteristics
- Low-maintenance
- Good milk yield

SIMMENTAL SM/SIM

Origin: Switzerland (Bernese Oberland)



Withers height, cows	136 – 144 cm
Weight, cows	650 – 850 kg
Withers height, bulls	144 – 152 cm
Weight, bulls	900 – 1200 kg
Birth weight	39 – 44 kg
Daily gain	1200 – 1500 g
Age at first calving	27 – 31 months
Calving interval	371 – 379 days
Easy calving rate	96.6 %
SBCHB herds	61 (2021)
SBCHB cows	1246 (2021)

- Speckled red to blond on white
- Early to average maturity
- Medium to large build
- High milk yield
- Good roughage intake capacity
- Originally dual-purpose breed (nowadays primarily beef worldwide)

TUX-ZILLERTAL TX/TUX

Origin: Austria (Zillertal)



Withers height, cows	120 – 130 cm
Weight, cows	500 – 650 kg
Withers height, bulls	132 – 140 cm
Weight, bulls	800 – 1000 kg
Birth weight	28 – 38 kg
Daily gain	
Age at first calving	24 – 30 months
Calving interval	330 – 380 days
Easy calving rate	97,8 %
SBCHB herds	12 (2021)
SBCHB cows	165 (2021)

- Black or mahogany with white markings
- Medium build
- Low-maintenance
- Good calving characteristics
- Robust

ZEBU (BOS INDICUS) ZE

Origin: India, Caucasia



Zebus farmed in Switzerland vary hugely in rump height and weight.

Bulls smaller than 120 cm and cows smaller than 110 cm are classified as miniature zebu.

SBCHB herds	17 (2021)
SBCHB cows	141 (2021)

- Undemanding
- Resistant
- Characteristic hump
- Nelore (large), Brahman (medium), miniature Zebu (small)
- Various origins and colourings (brown, black, red and white)

BEEF CATTLE BREEDS

BAZADAISE BZ/BZD



Origin: Southwest France

DAHOMEY DA



Origin: West Africa

HERÉNS HR



Origin: Switzerland (Valais)

GASCONNE GC/GAS



Origin: France (Pyrenees)

GELBIEH GV/GVH



Origin: Southern Germany

HINTERWÄLDER HW/HWD



Origin: Southern Germany (Black Forest)

LOWLINE CATTLE LC



Origin: Australia

MAINE ANJOU MA



Origin: Northwest France (Pays de la Loire)

BEEF CATTLE BREEDS

PARTHENAISE PA/PAR



Origin: Western France (Parthenay)

PINZGAUER PZ/PIN



Origin: Austria (Salzburger Alps)

PUSTERTALER SPRINZEN PS



Origin: Italy (Pustertal, South Tyrol)

SHORTHORN SH/BSH



Origin: Northeast coast of England

TEXAS LONGHORN TL



Origin: America (Texas)

VOSGIENNE vs



Origin: France (Vosges)

WAGYU WA/WAG



Origin: Japan

WELSH BLACK WB/WBL



Origin: England (Southwest)



MUTTERKUH SCHWEIZ
VACHE MÈRE SUISSE
VACCA MADRE SVIZZERA
BEEF CATTLE SWITZERLAND

Beef Cattle Switzerland

Gass 10
Postfach
CH-5242 Lupfig

Phone +41 56 462 33 55

www.mutterkuh.ch
info@mutterkuh.ch

